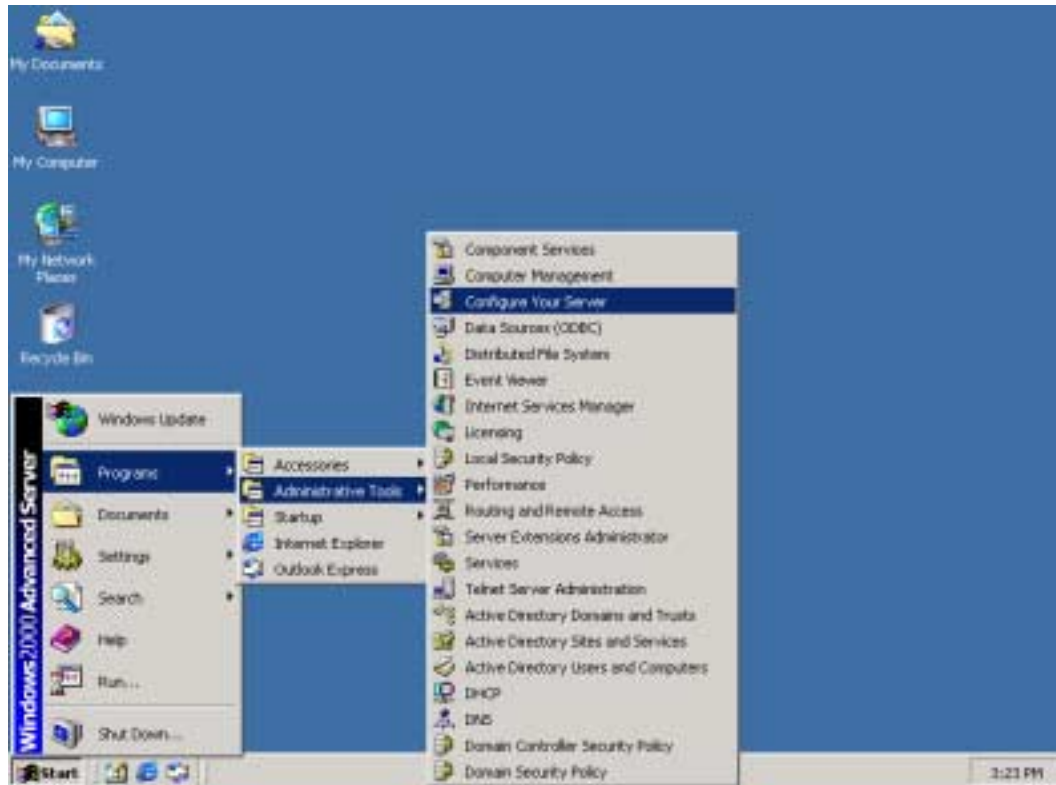


Windows2000 RIS (Remote Install Services) Install Notes

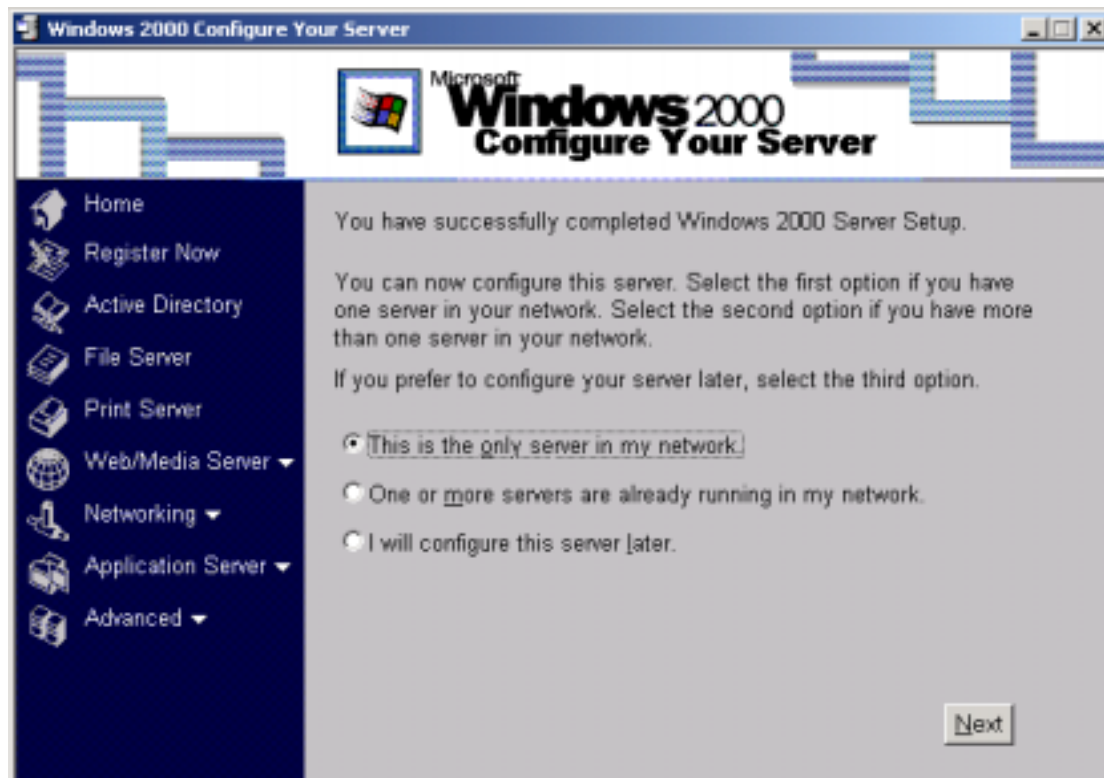
After you setup Windows2000 Server all right. Please follow up all steps, it will step by step to teach you how to build Remote Install Services in Windows 2000.

Pay attention!!! Free size(about 1.5~2GB) in your HD is very important.

《Figure 1》



《Figure 2》 Select Item 2, if you have any server in your network.



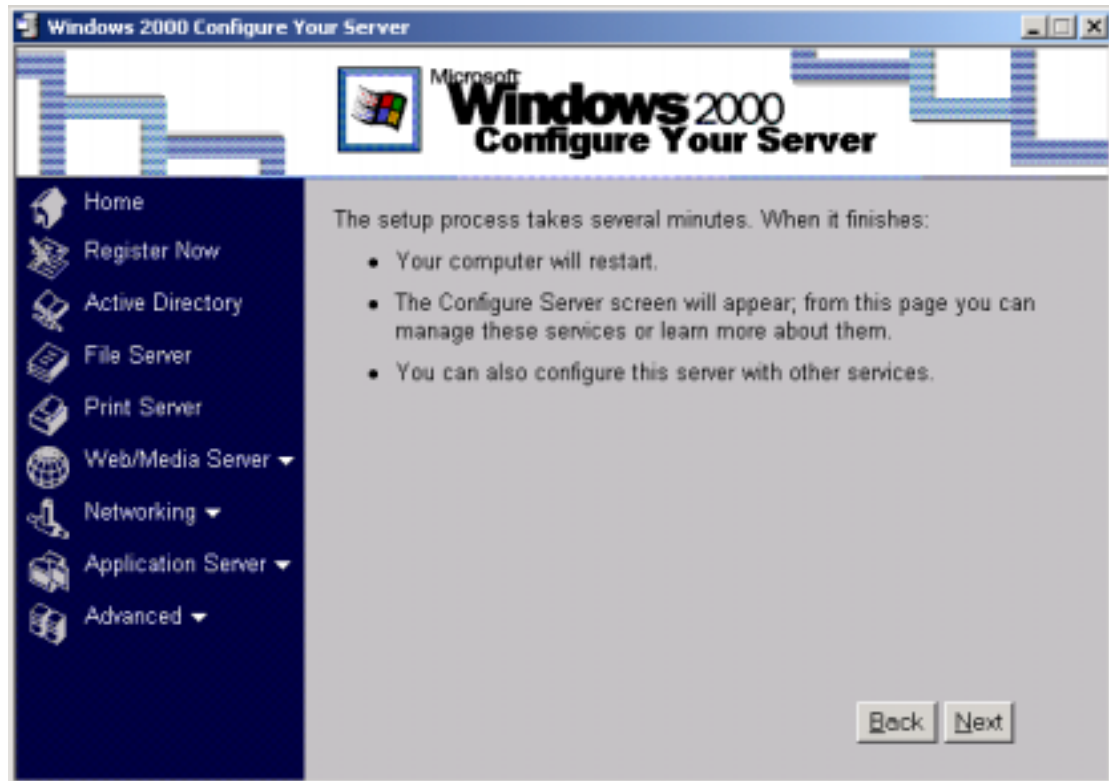
《Figure 3》 Click next.



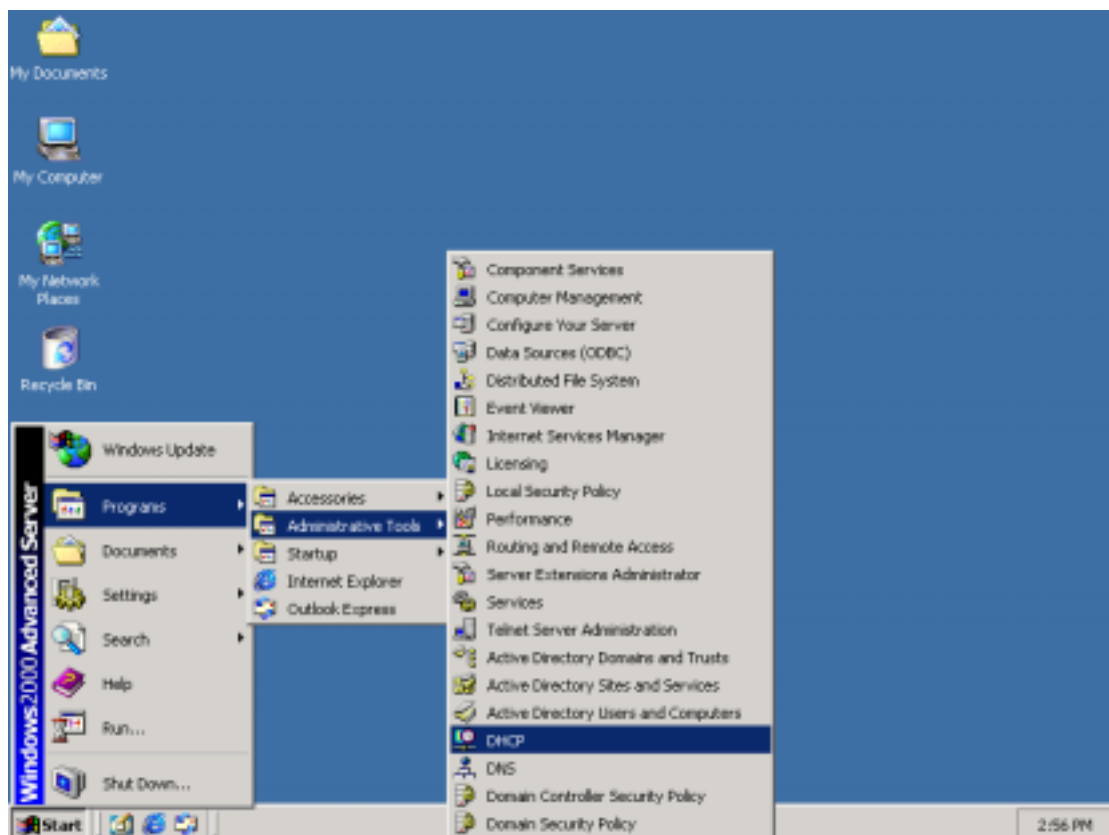
《Figure 4》 fill in blank side. And think about which is perfect on your network.



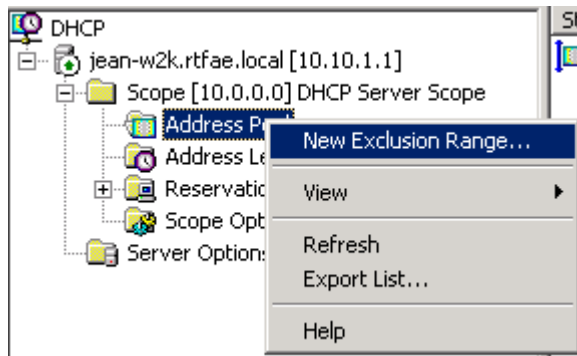
《Figure 5》 Click Next, wait for finish, then restart your computer.



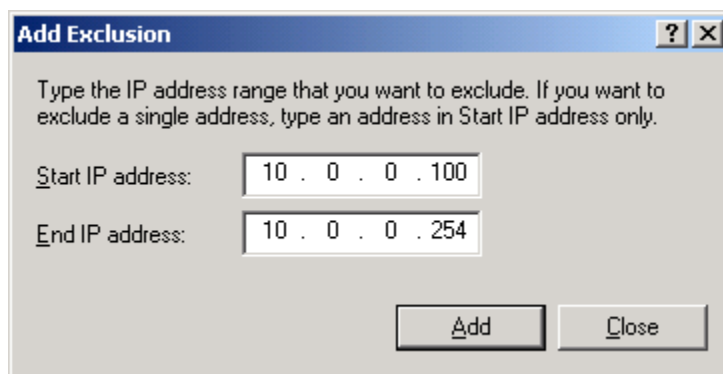
《Figure 6》



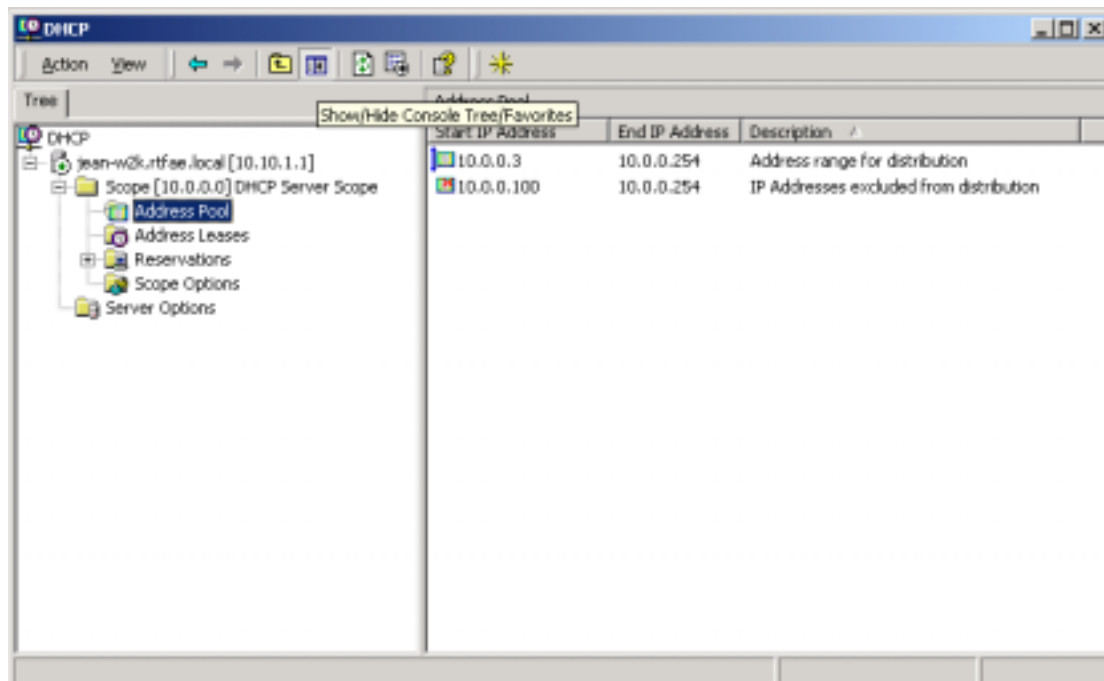
《Figure 7》 Add New exclusion range.



《Figure 8》

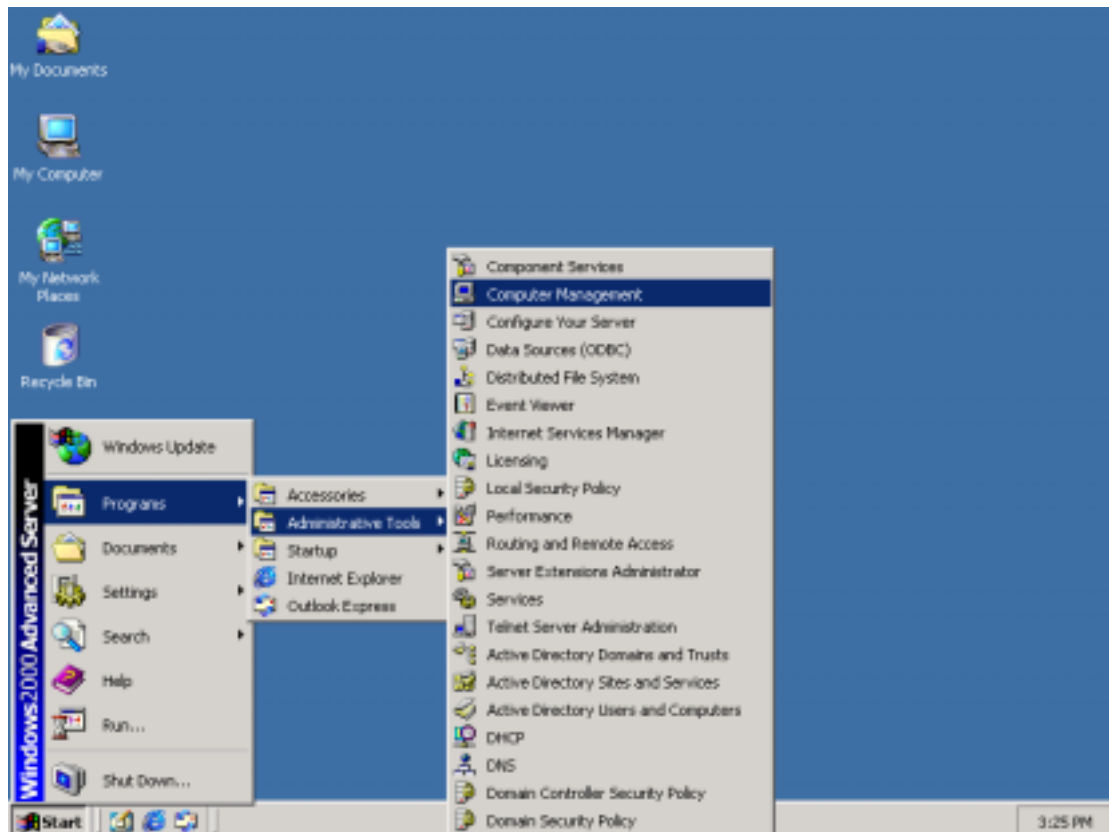


《Figure 9》

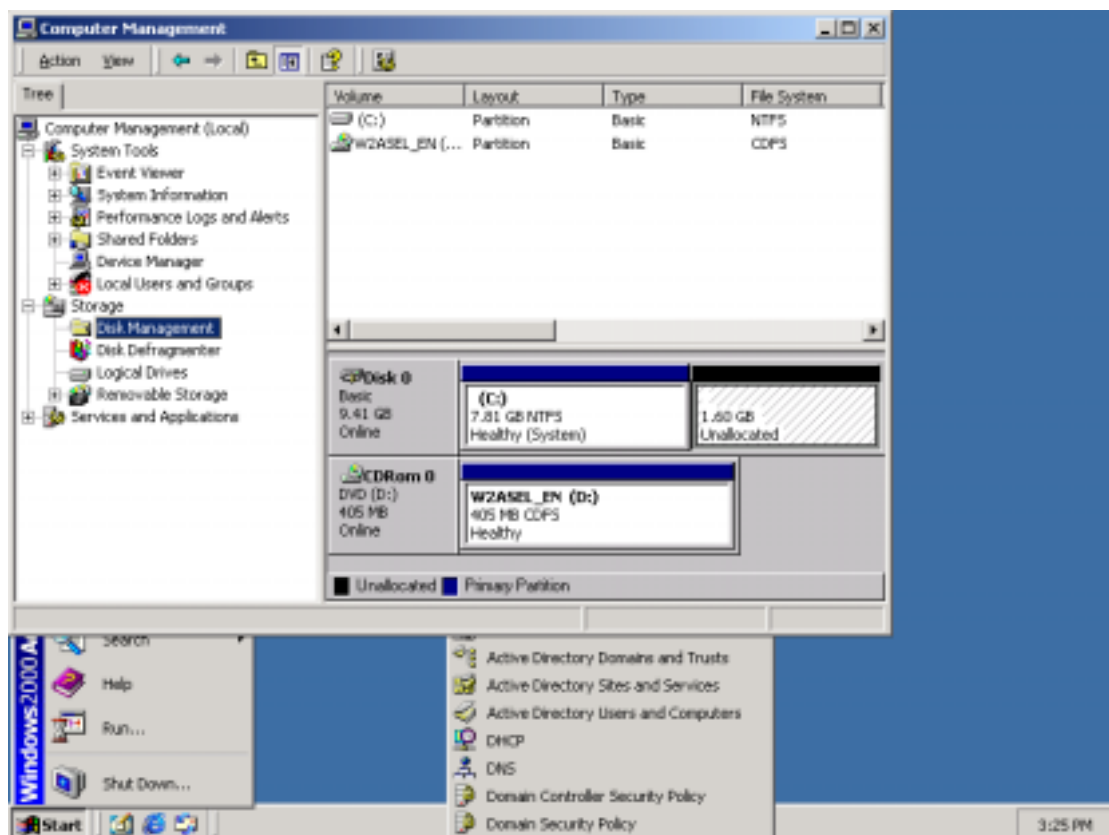


Now, three services had build all right.
In Next steps, will start to do RIS install.

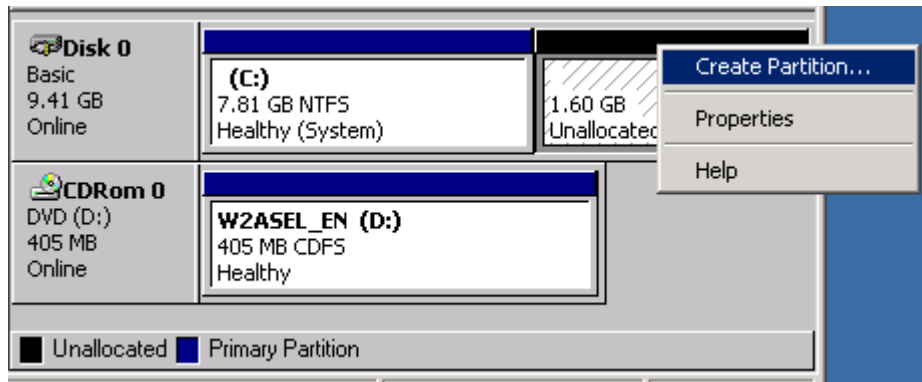
《Figure 10》 Create a partition in your HD for install RIS image.



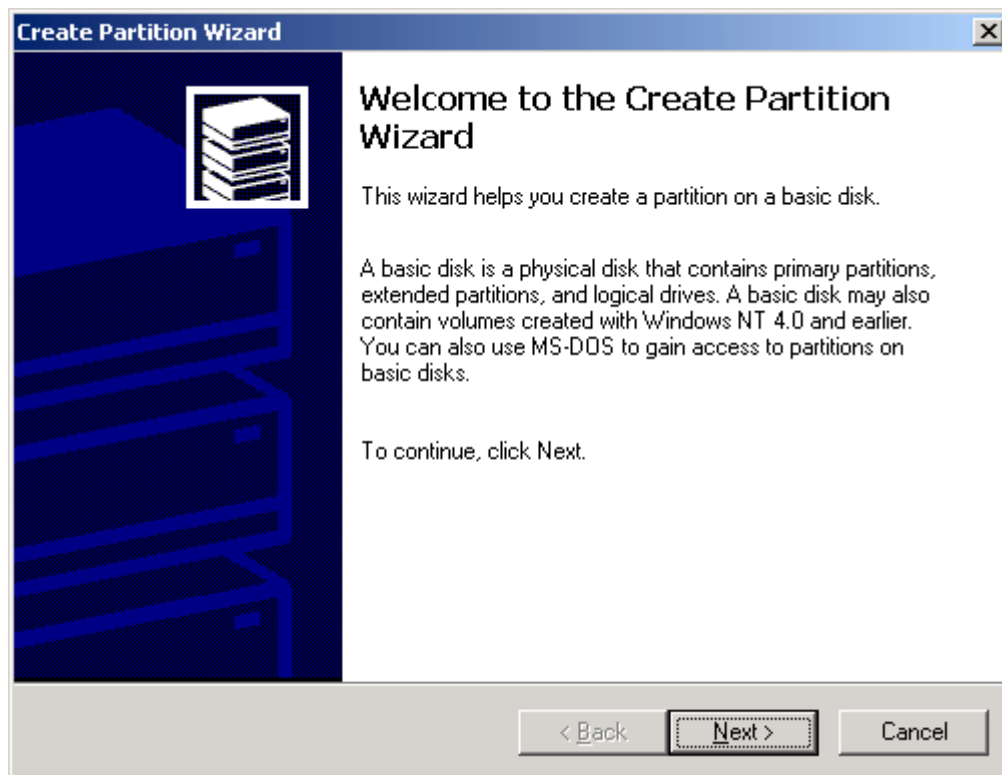
《Figure 11》



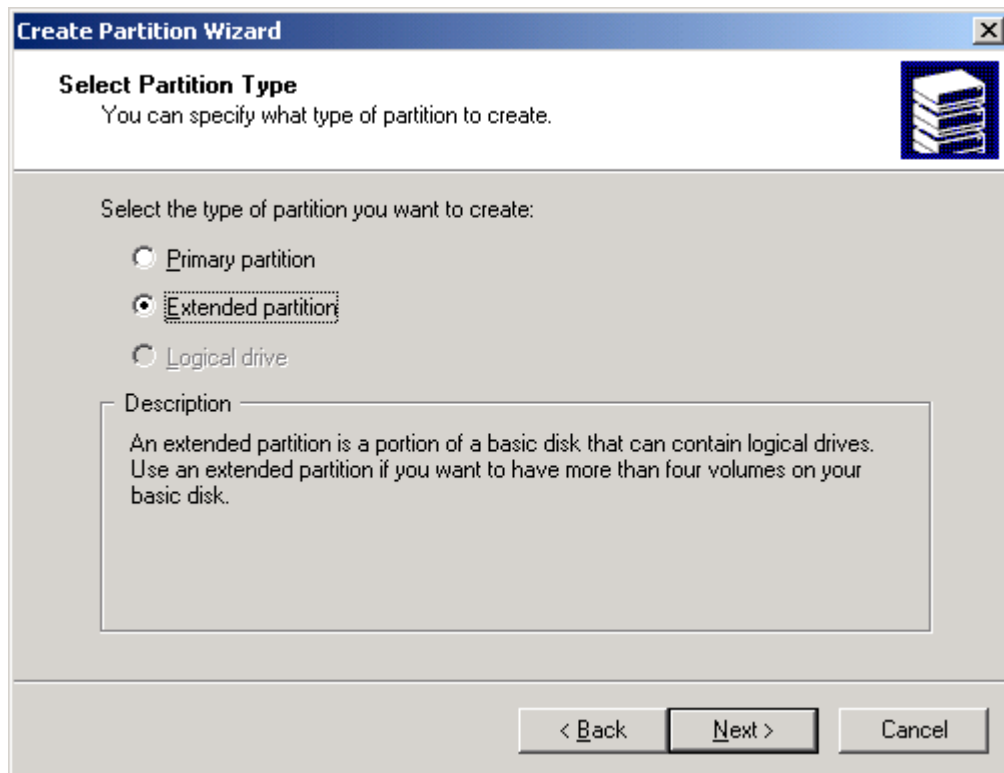
《Figure 12》



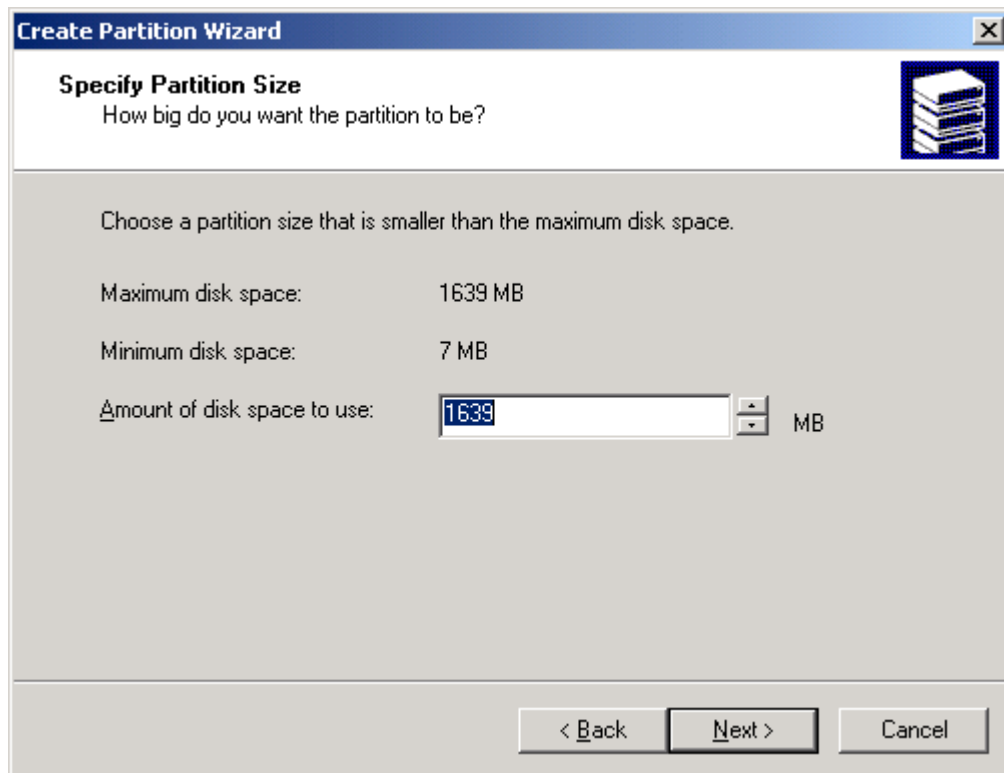
《Figure 13》



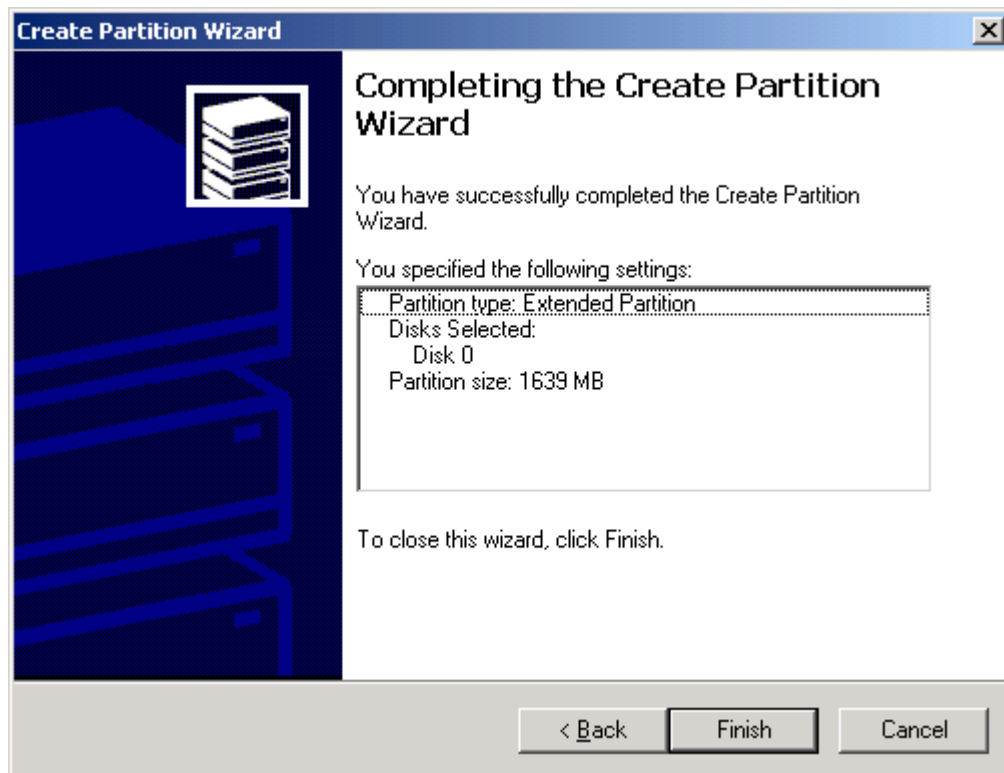
《Figure 14》



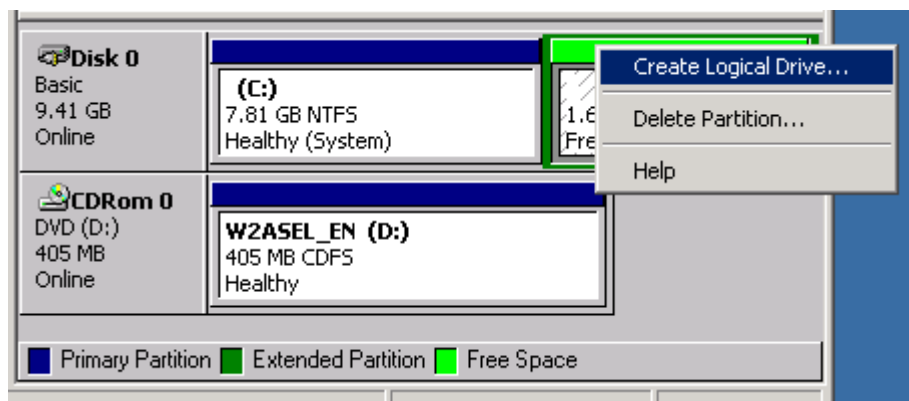
《Figure 15》



《Figure 16》

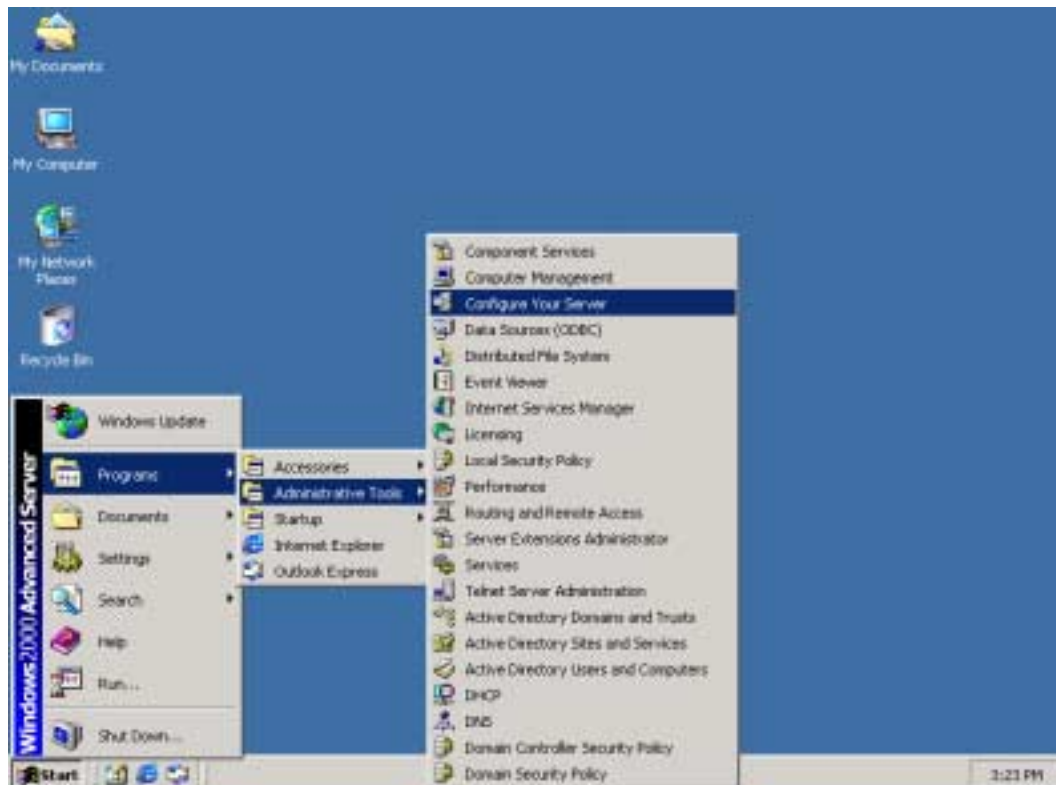


《Figure 17》 Create Logical Drive



After create partition, Install RIS will start.

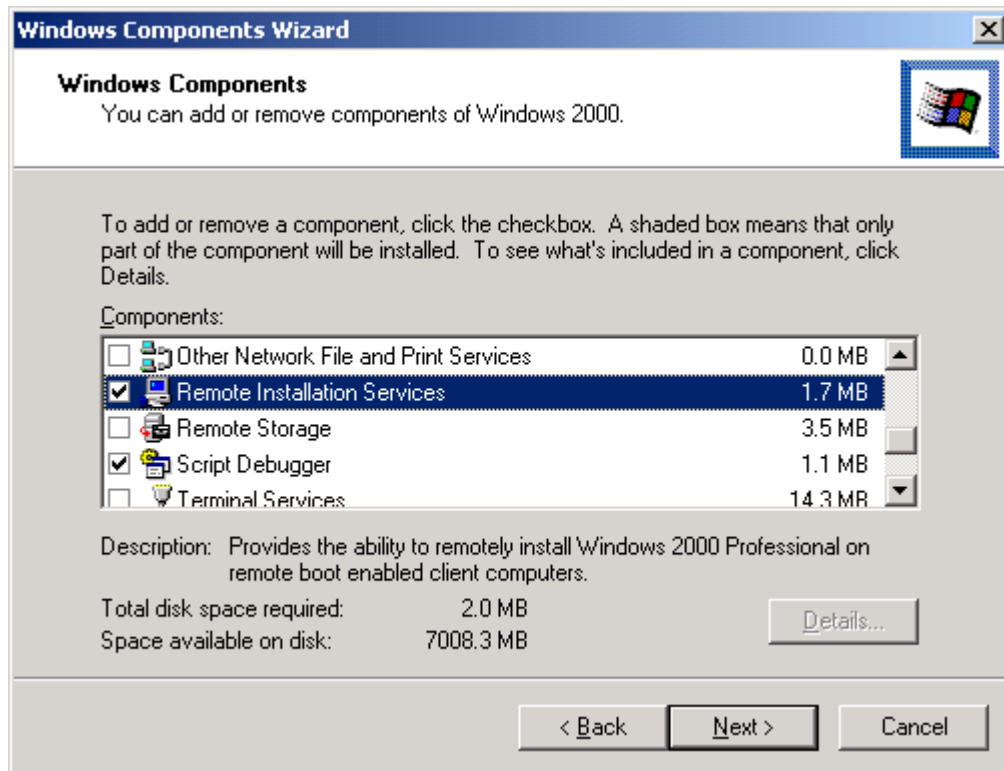
《Figure 18》



《Figure 19》 Click Start.



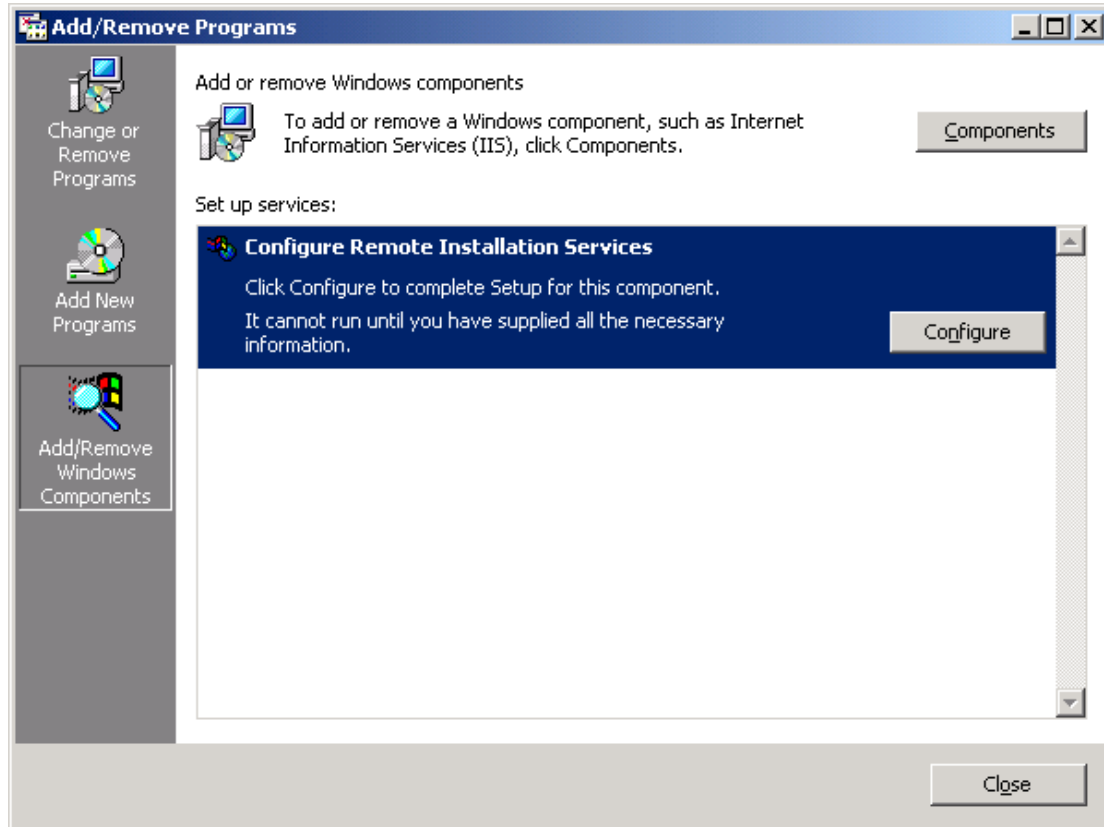
《Figure 20》 Select Remote Installation Services to install



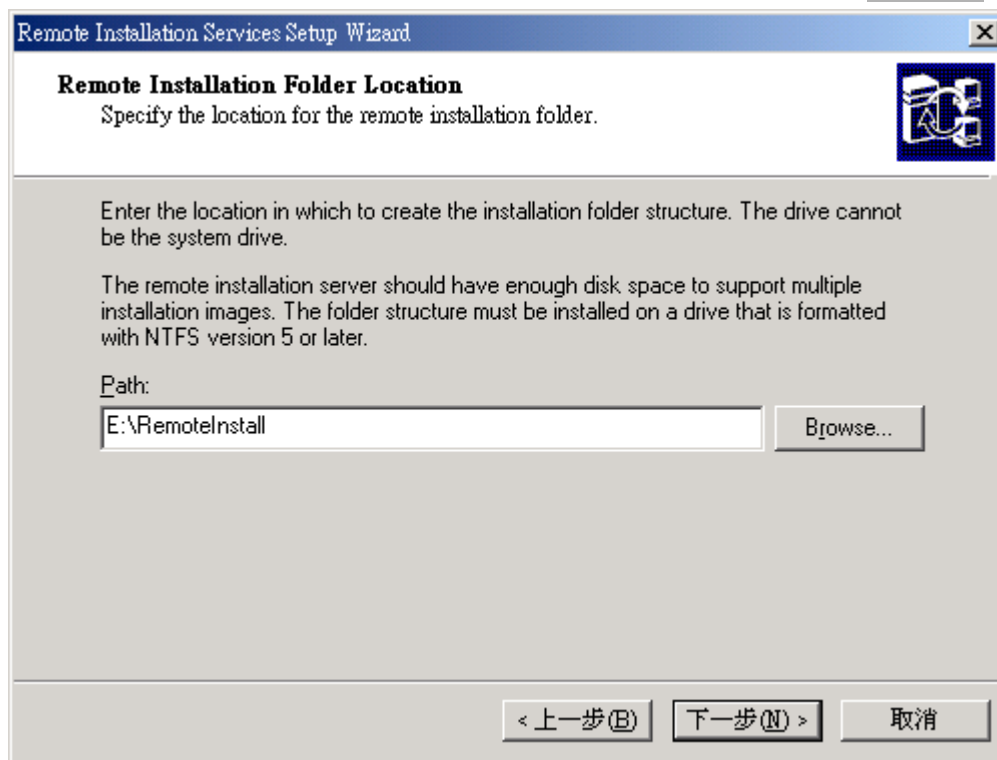
《Figure 21》



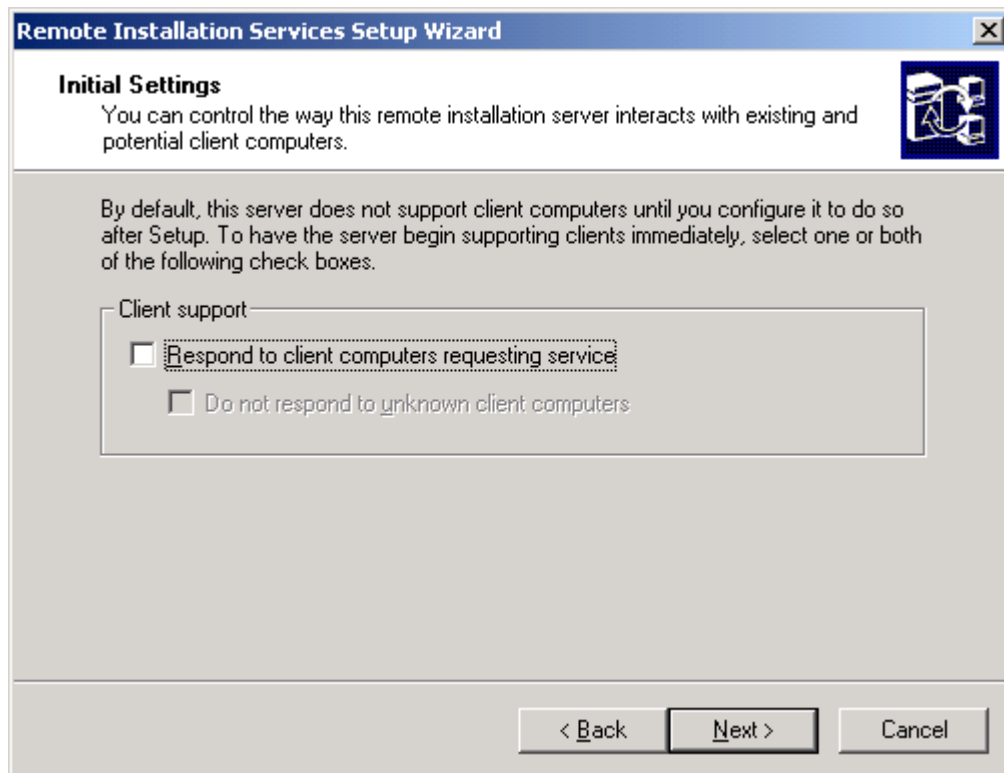
《Figure 22》 Click Configure.



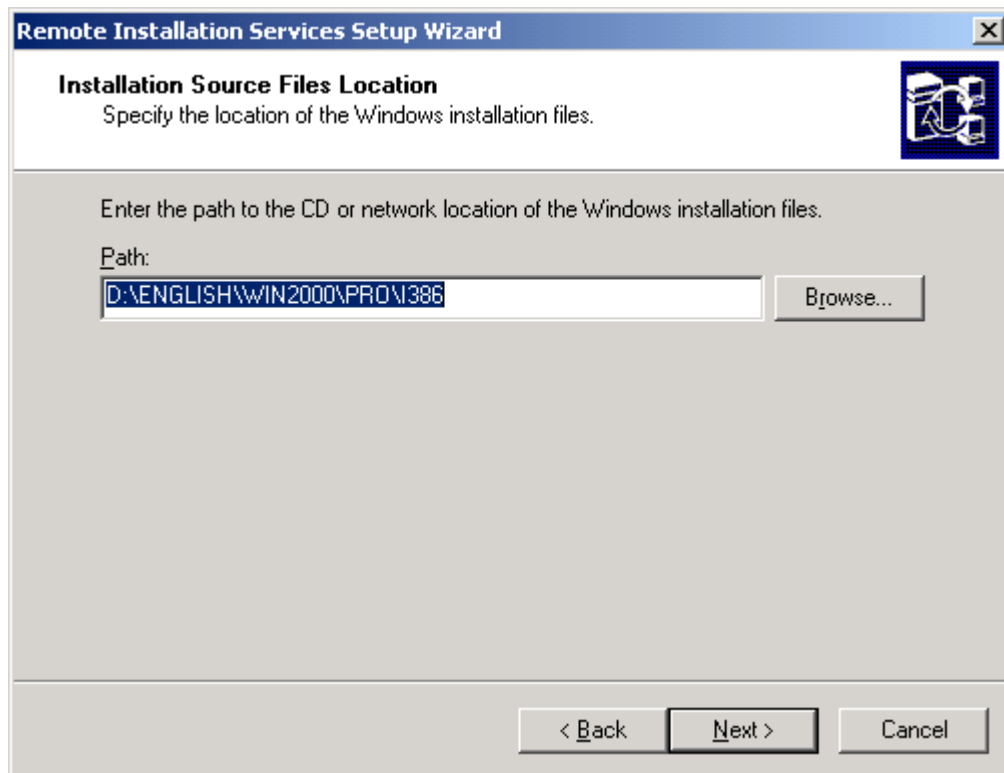
《Figure 23》 E is your partition no. that you create logic partition in Figure 17



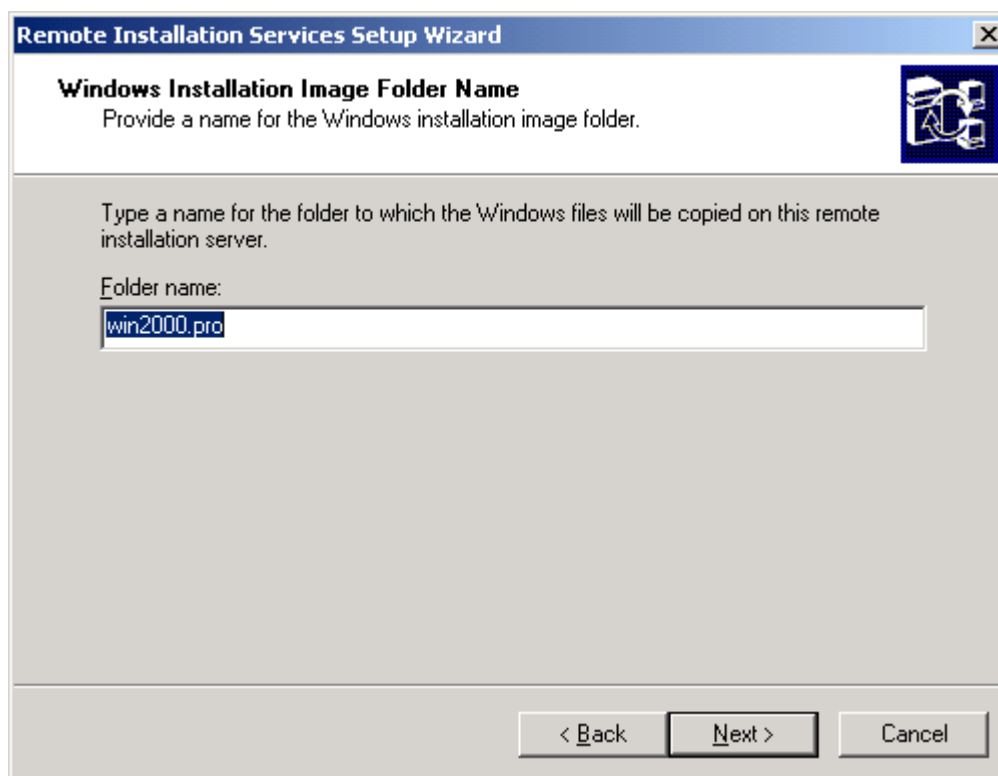
Just click next.



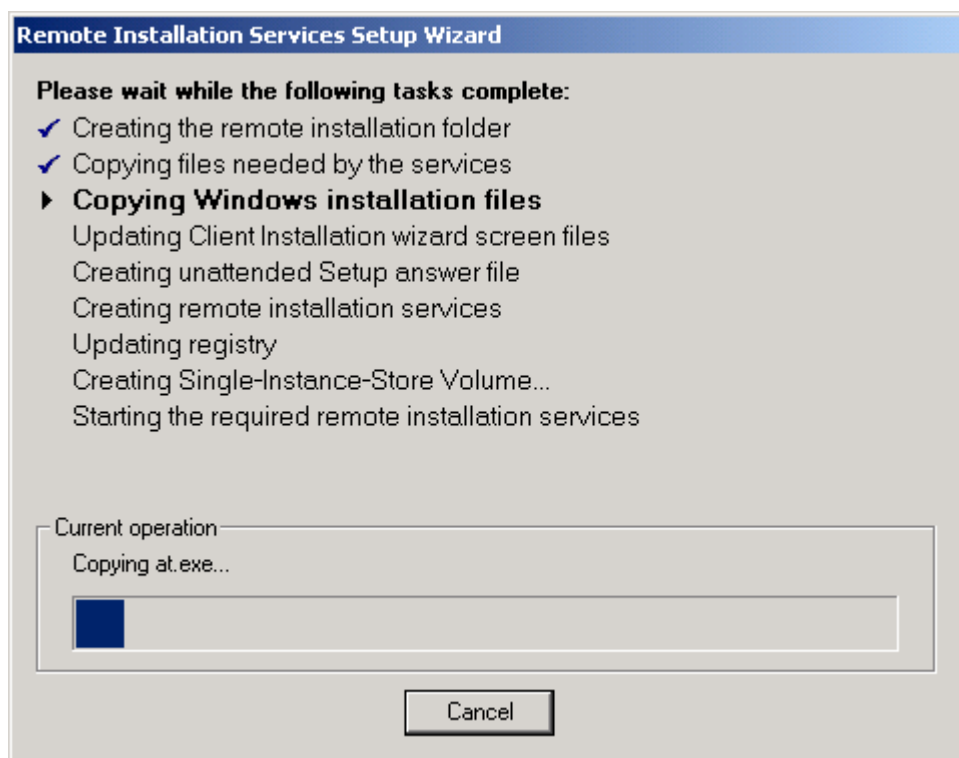
《Figure 24》 Choose your I386 directory in your Windows2000 CD disc.



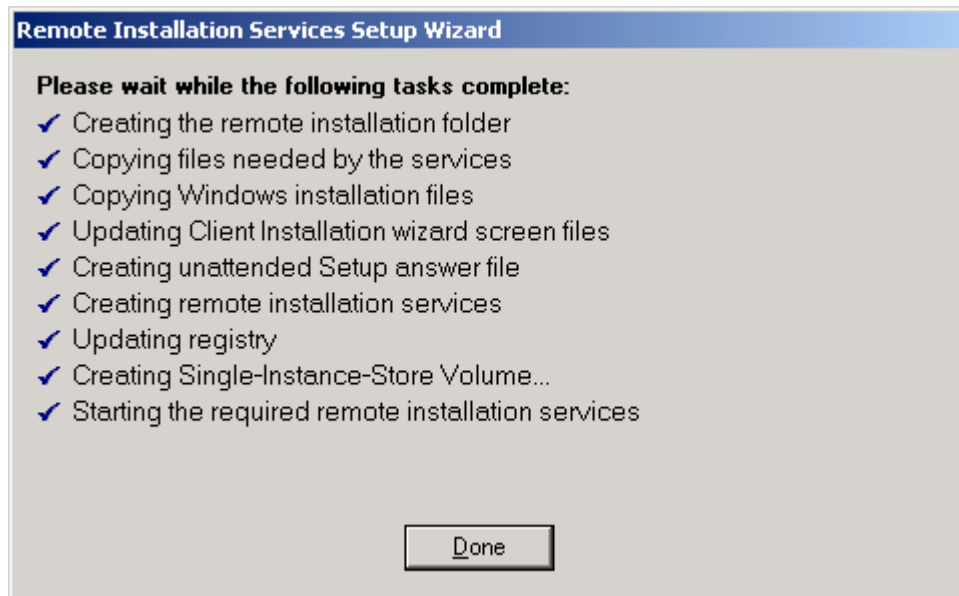
《Figure 25》 Click next



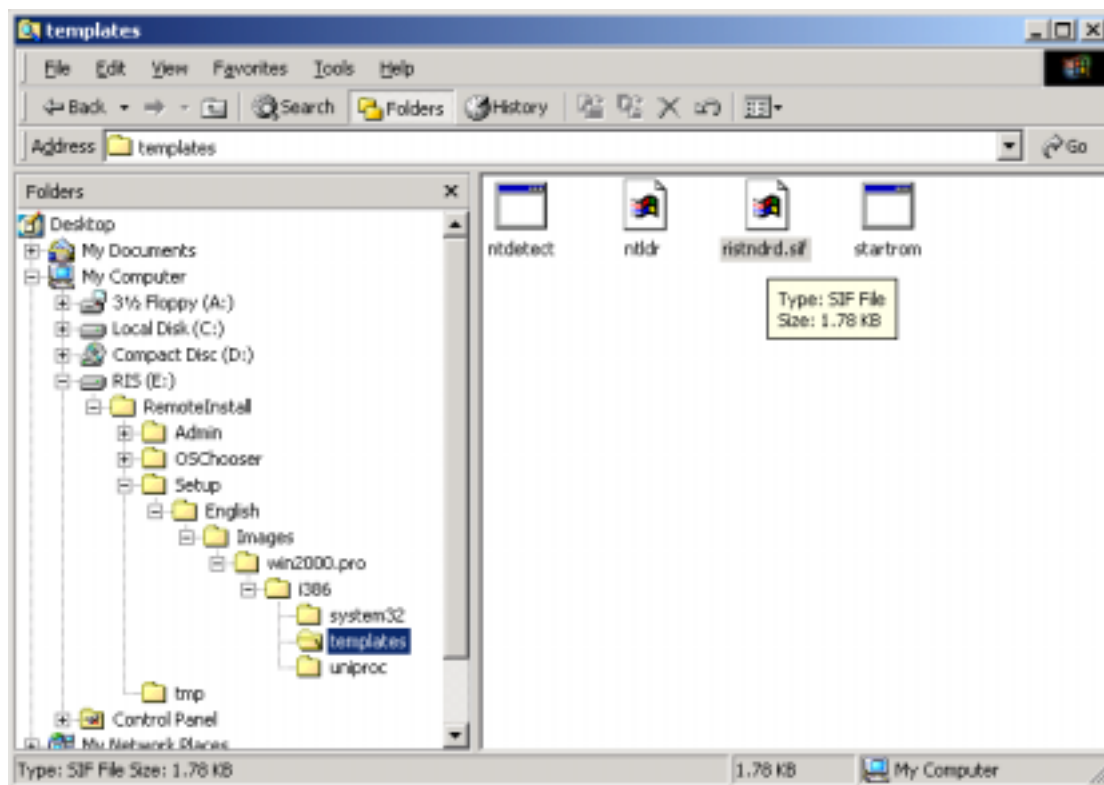
《Figure 26》



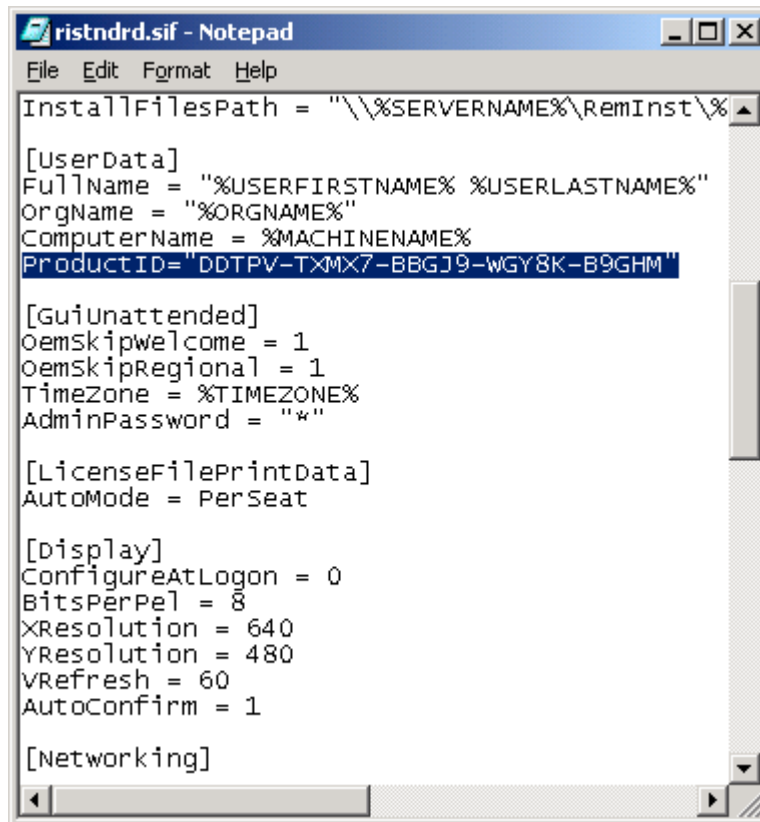
《Figure 27》



《Figure 28》 Follow next step, have to modify ristndrd.sif file

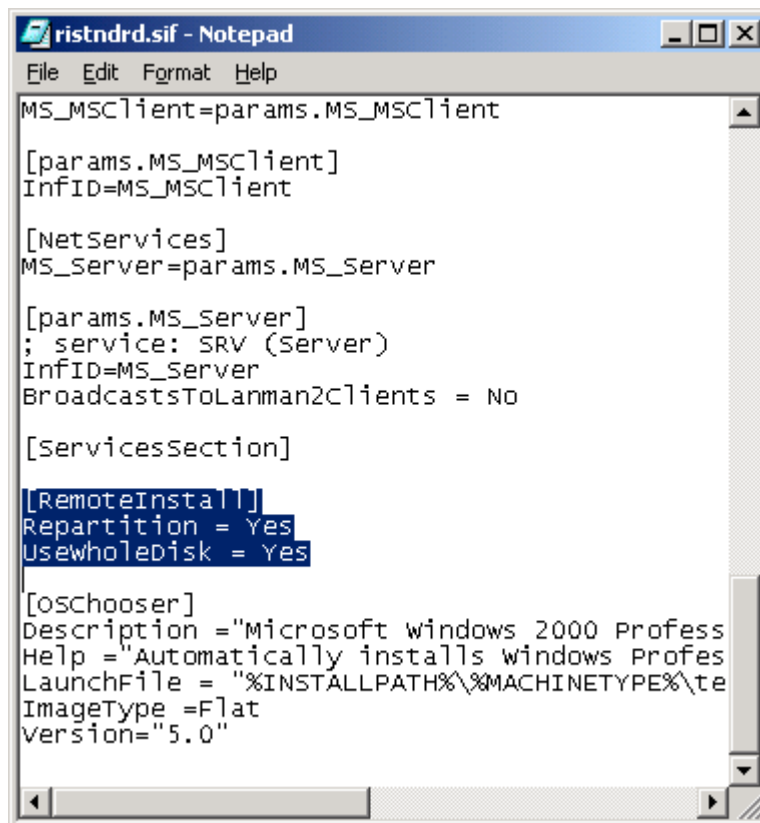


《Figure 29》 Add a line for Product ID, it is your Windows 2000 professional key NO..



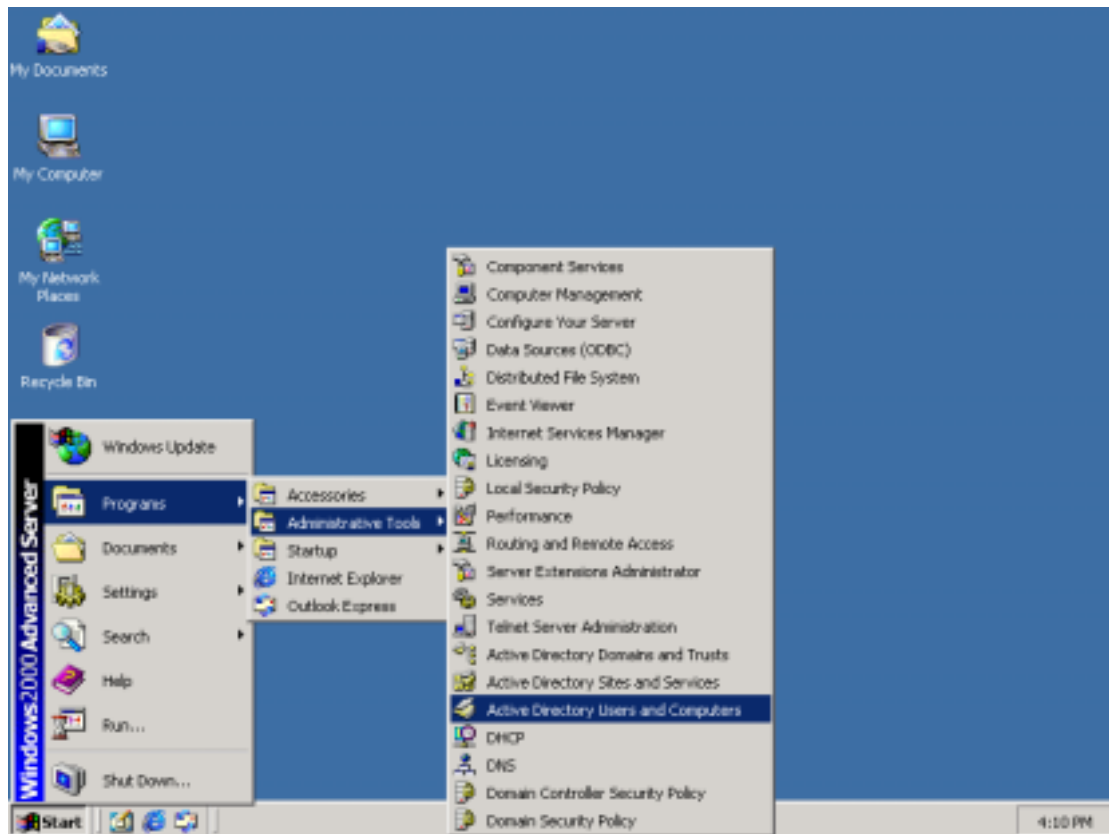
```
ristndrd.sif - Notepad
File Edit Format Help
InstallFilePath = "\\%SERVERNAME%\RemInst\%
[UserData]
FullName = "%USERFIRSTNAME% %USERLASTNAME%"
OrgName = "%ORGNAME%"
ComputerName = %MACHINENAME%
ProductID="DDTPV-TXMX7-BBGJ9-WGY8K-B9GHM"
[GuiUnattended]
OemSkipwelcome = 1
OemSkipRegional = 1
TimeZone = %TIMEZONE%
AdminPassword = "*"
[LicenseFilePrintData]
AutoMode = PerSeat
[Display]
ConfigureAtLogon = 0
BitsPerPel = 8
XResolution = 640
YResolution = 480
VRefresh = 60
AutoConfirm = 1
[Networking]
```

《Figure 30》 Two lines in Item RemoteInstall , will delete all partition in Client HD.

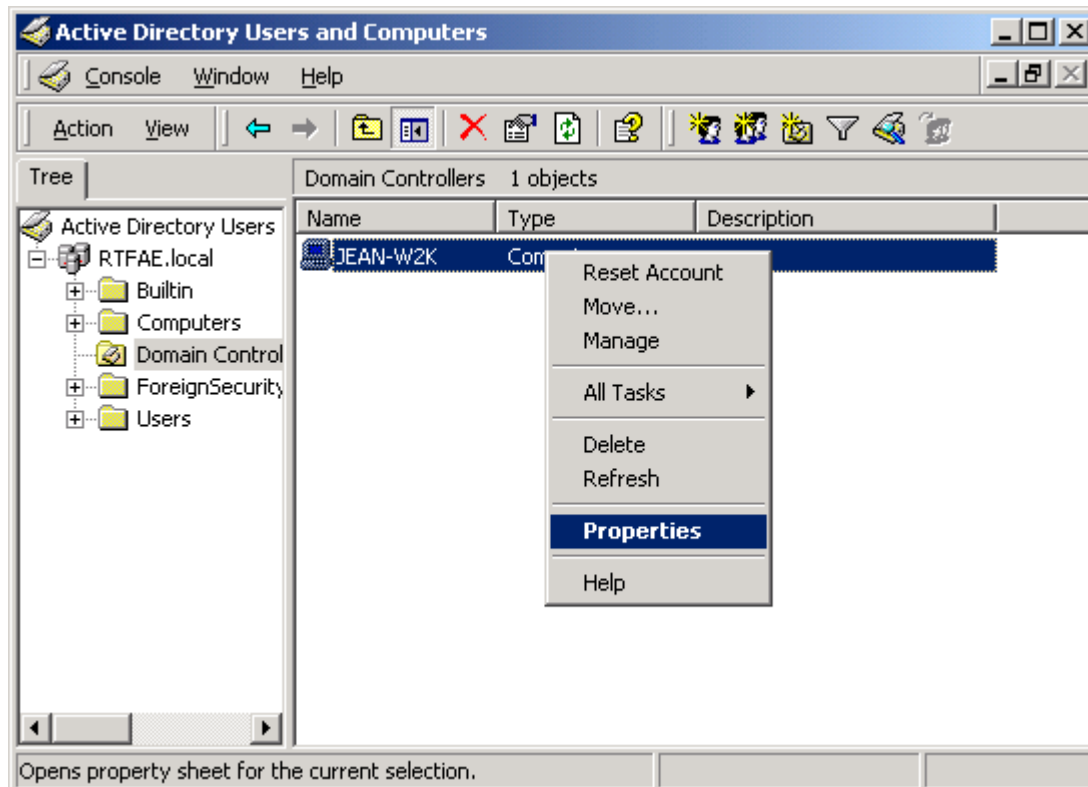


```
ristndrd.sif - Notepad
File Edit Format Help
MS_MSCClient=params.MS_MSCClient
[params.MS_MSCClient]
InfID=MS_MSCClient
[NetServices]
MS_Server=params.MS_Server
[params.MS_Server]
; service: SRV (Server)
InfID=MS_Server
BroadcastsToLanman2Clients = No
[ServicesSection]
[RemoteInstall]
Repartition = Yes
UseWholeDisk = Yes
[OSChooser]
Description="Microsoft windows 2000 Profess
Help ="Automatically installs windows Profes
LaunchFile = "%INSTALLPATH%\%MACHINETYPE%\te
ImageType =Flat
Version="5.0"
```

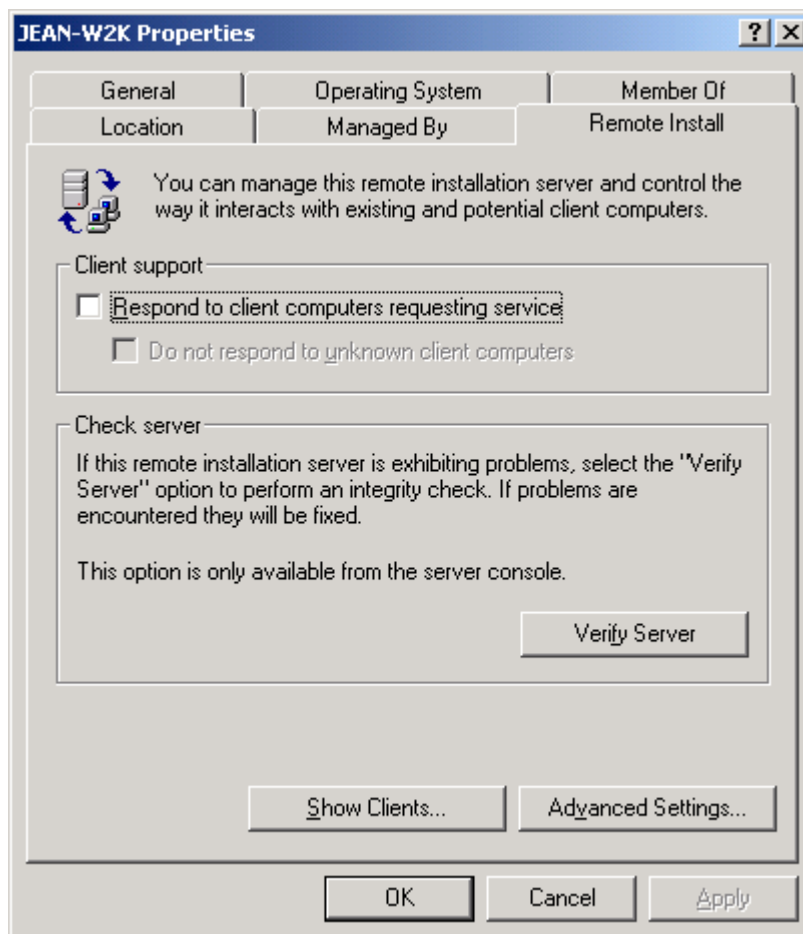

《Figure 31》 Add user or computer that you want to assign who log on your server.



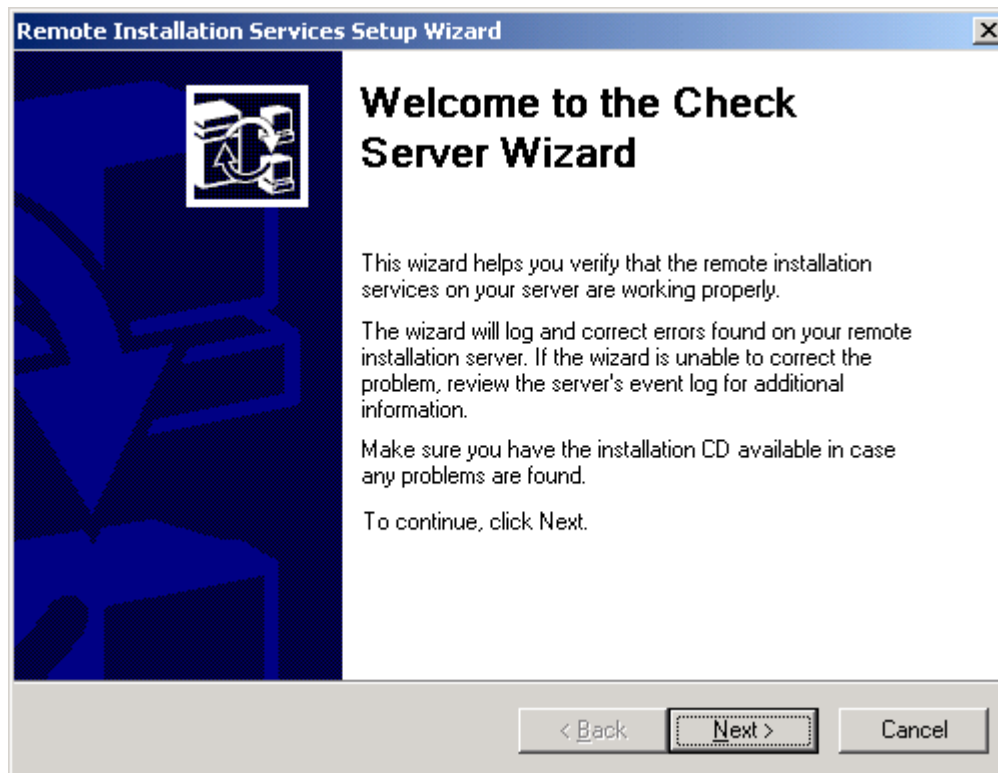
《Figure 32》 Touch right side in your mouse.



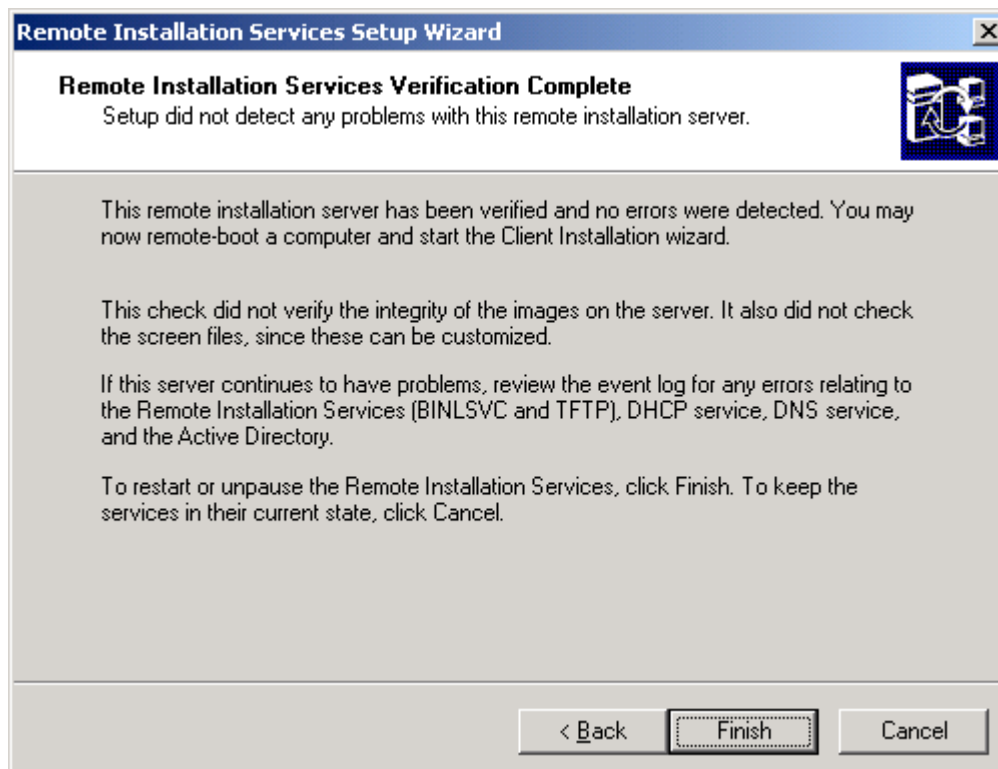
《Figure 33》



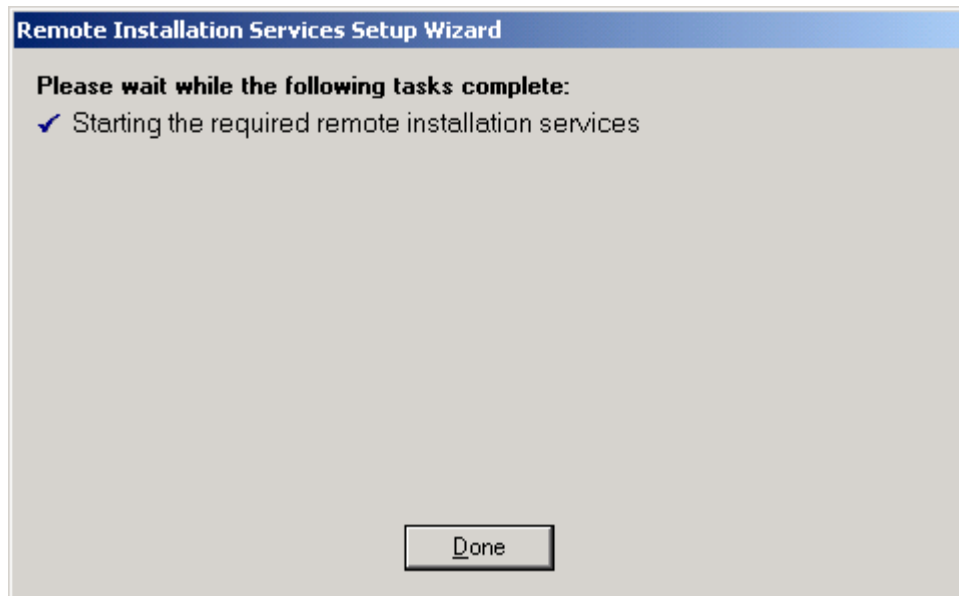
《Figure 34》



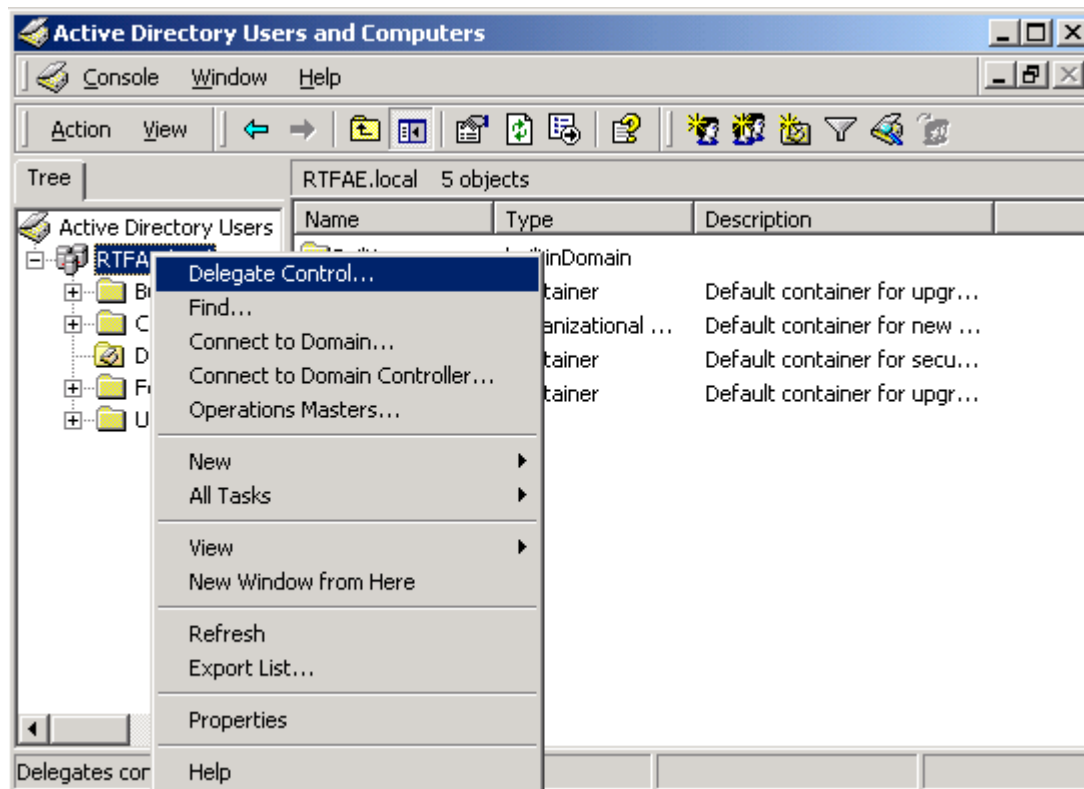
《Figure 35》



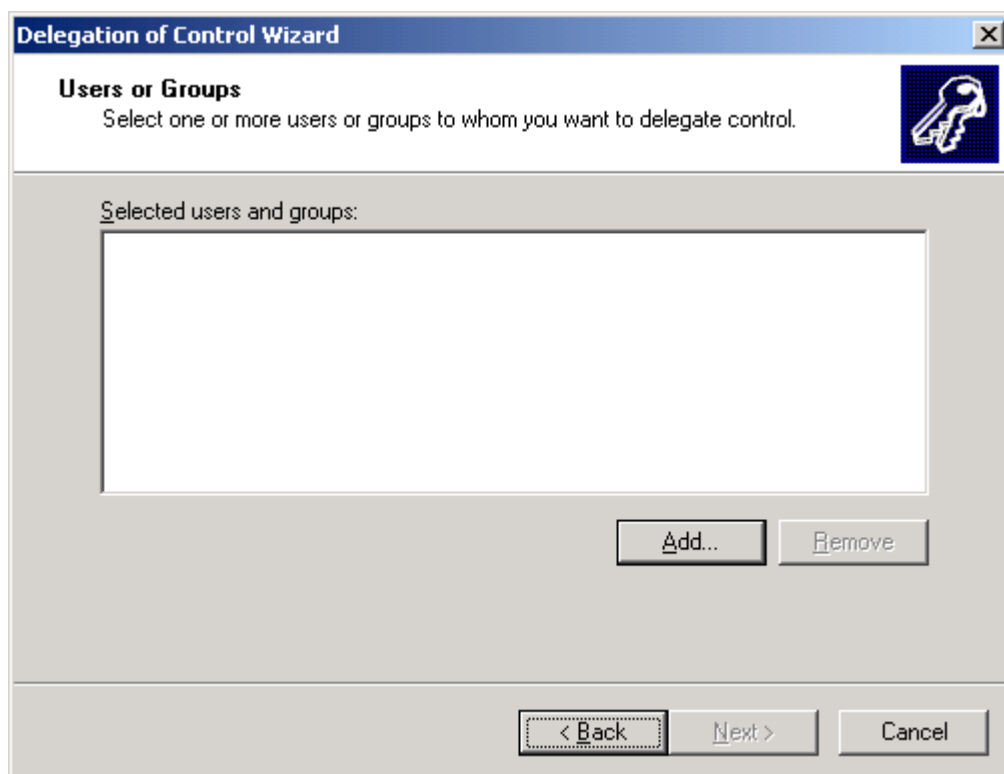
《Figure 36》



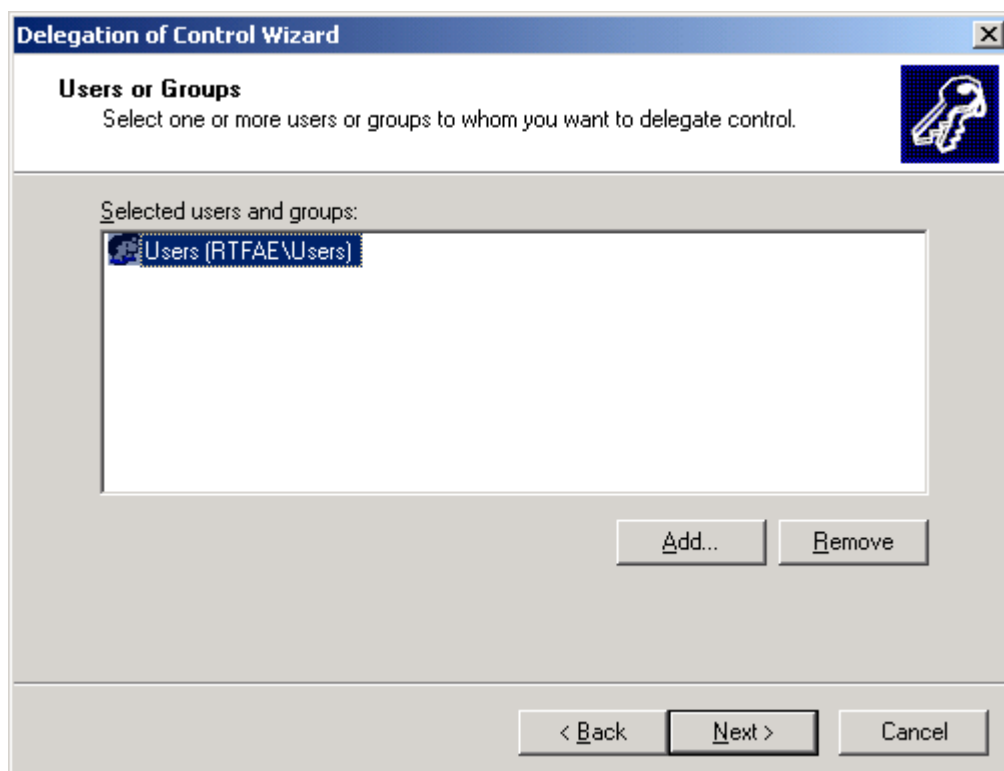
《Figure 37》



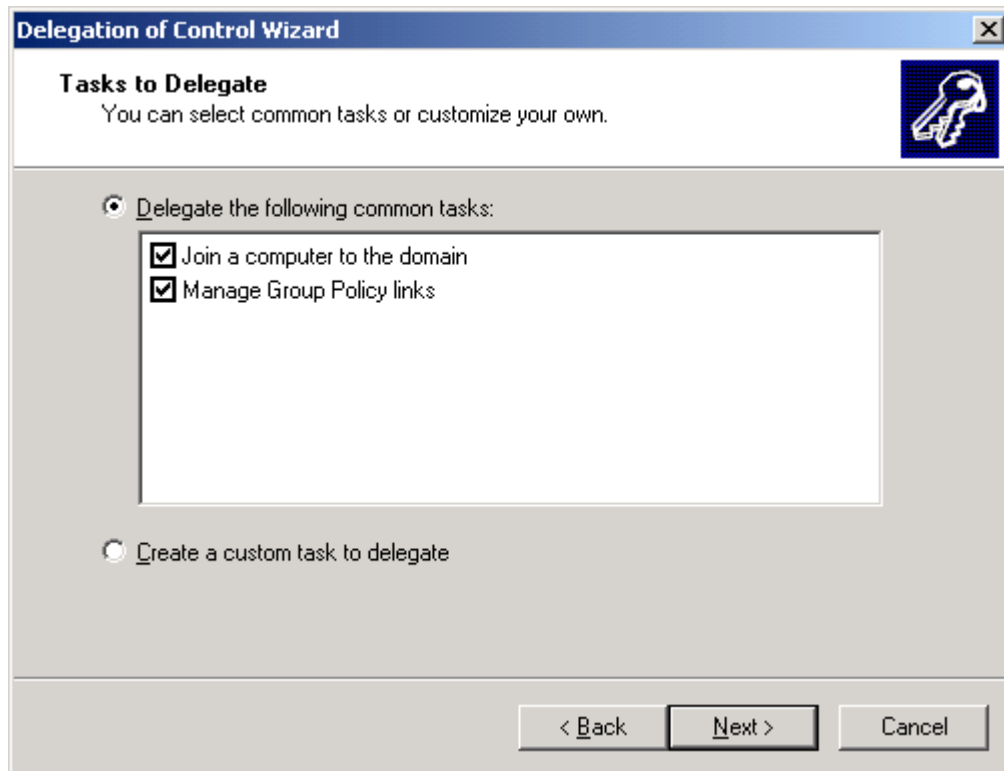
《Figure 38》



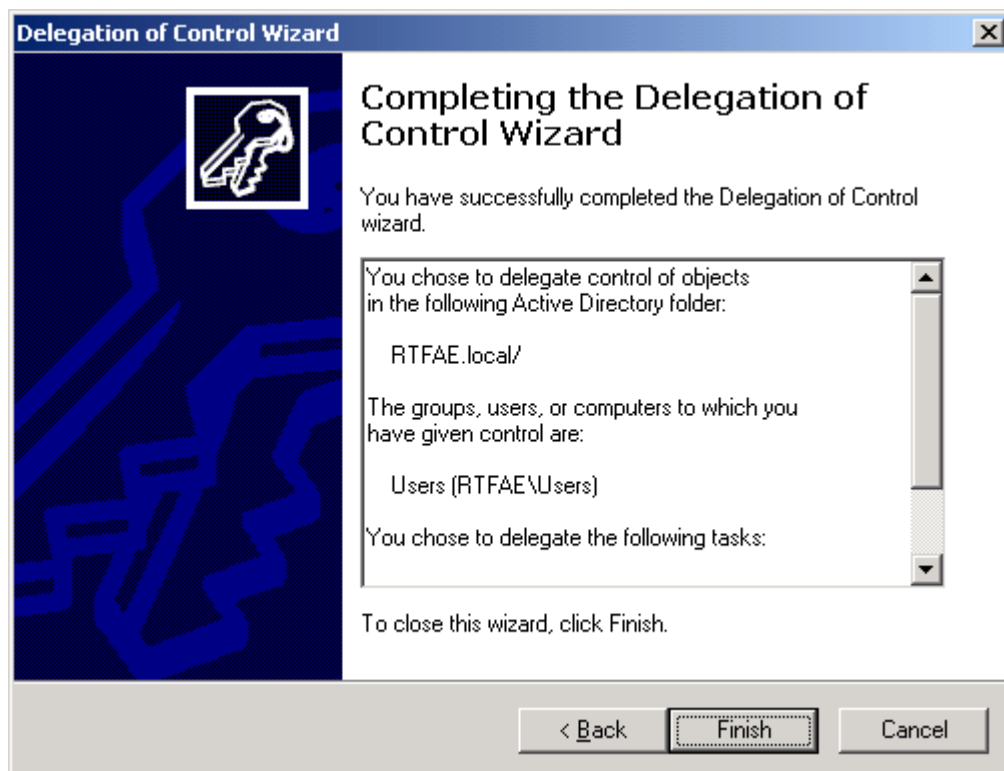
《Figure 39》



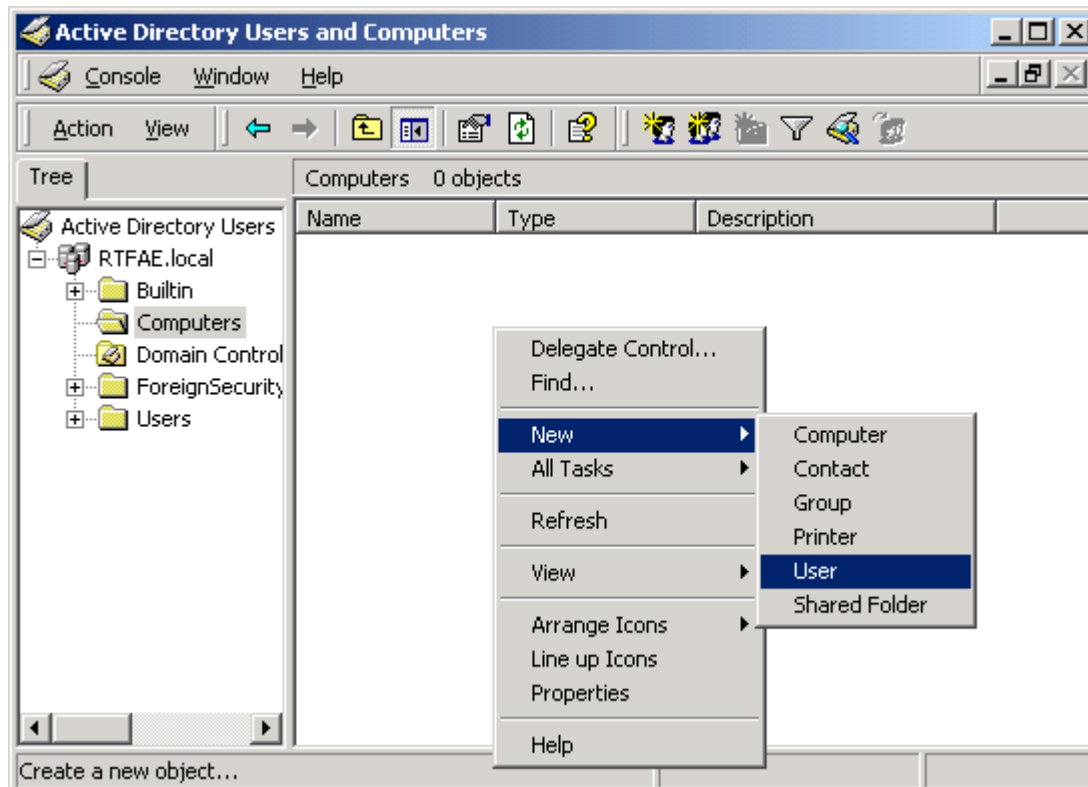
《Figure 40》



《Figure 41》



《Figure 42》



《Figure 43》 Fill in this form. Please looks below that for your reference.

New Object - User

Create in: RTFAE.local/Computers

First name: realtek Initials:

Last name:

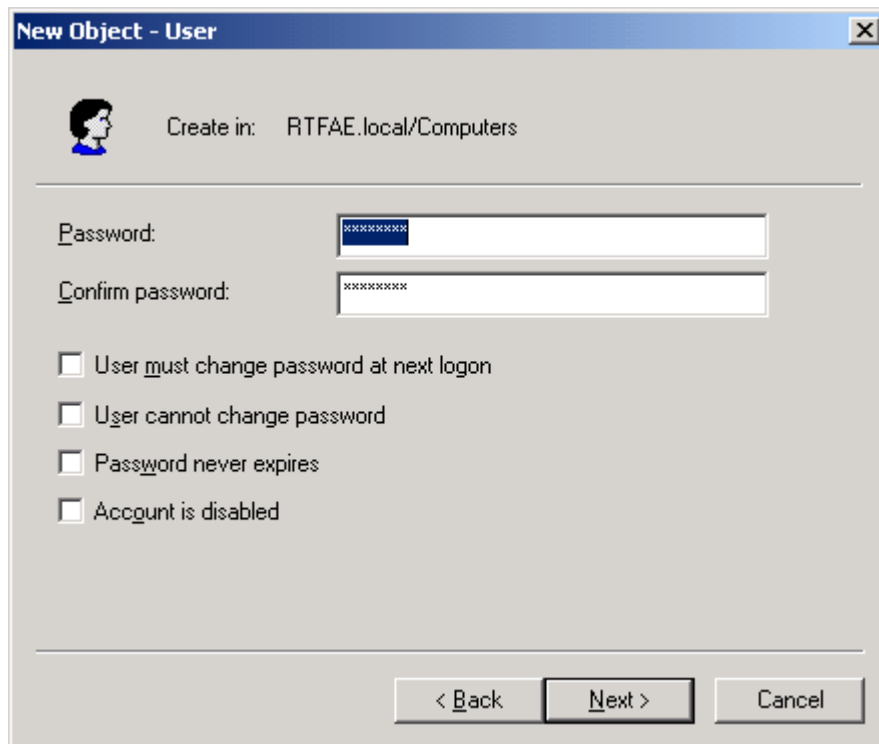
Full name: realtek

User logon name: realtek @RTFAE.local

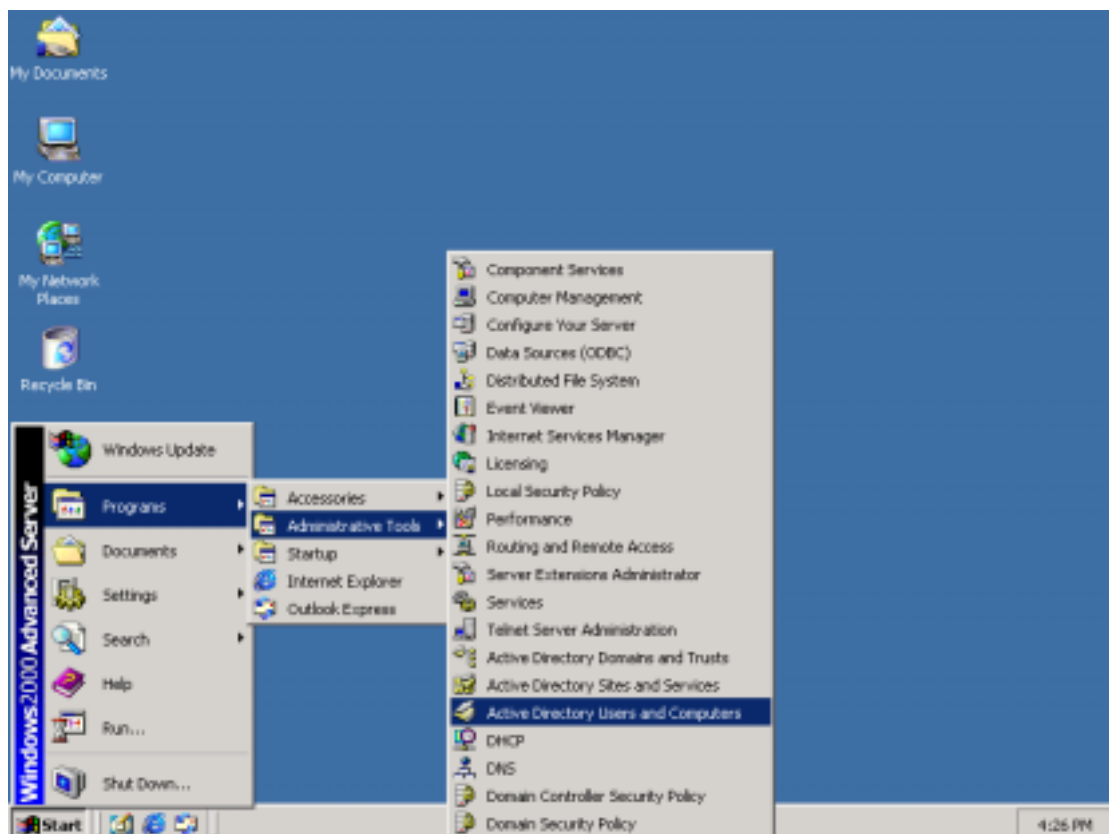
User logon name (pre-Windows 2000): RTFAE\ realtek

< Back Next > Cancel

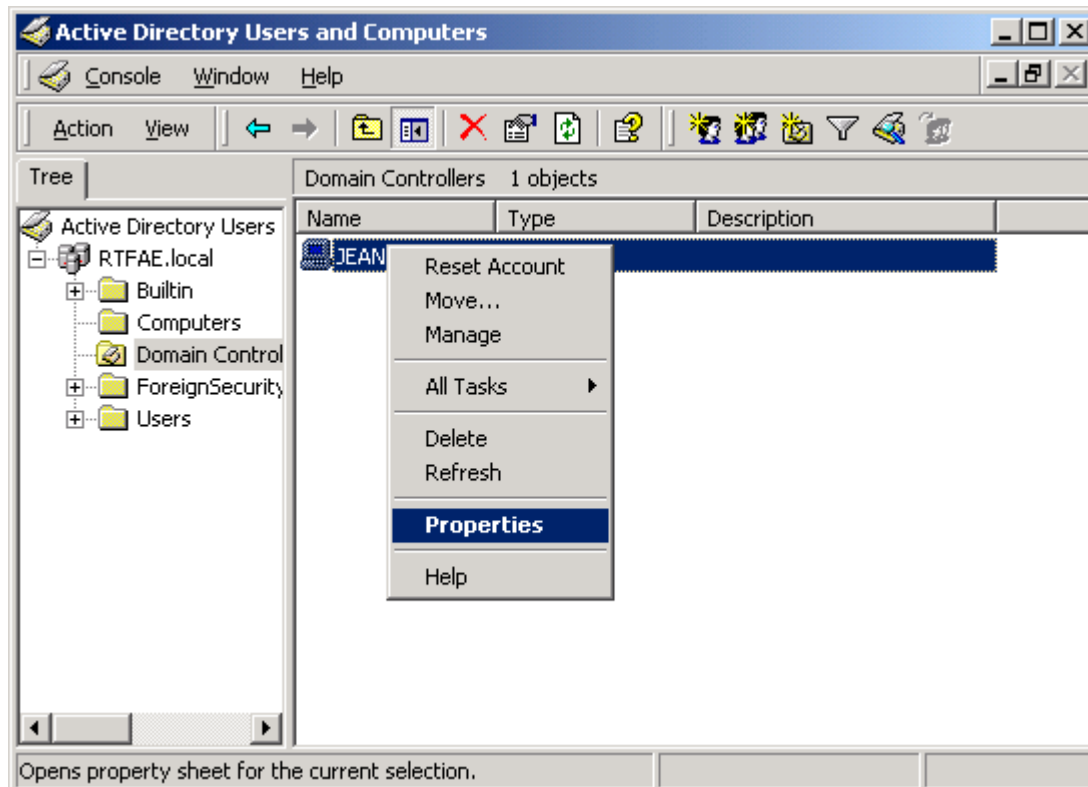
《Figure 44》



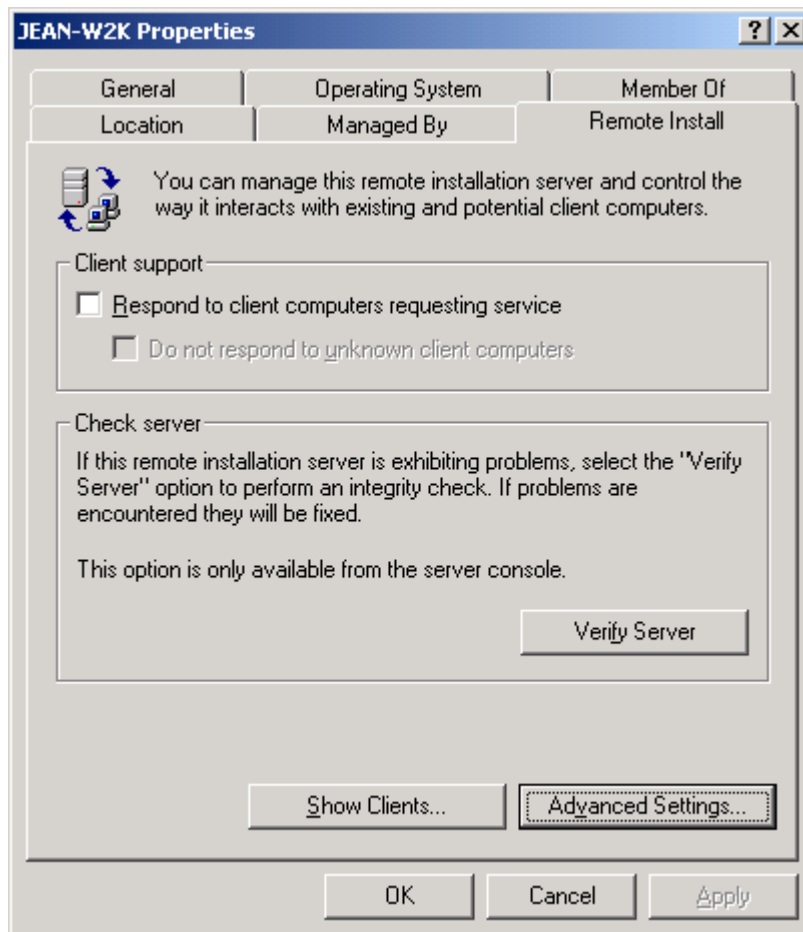
《Figure 45》



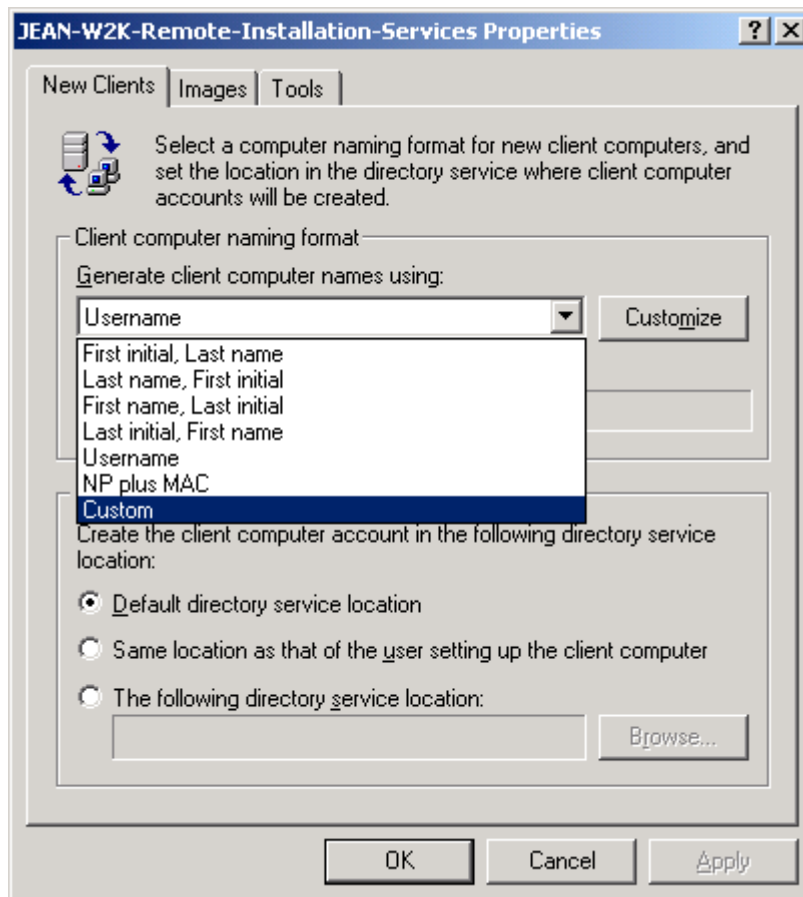
《Figure 46》



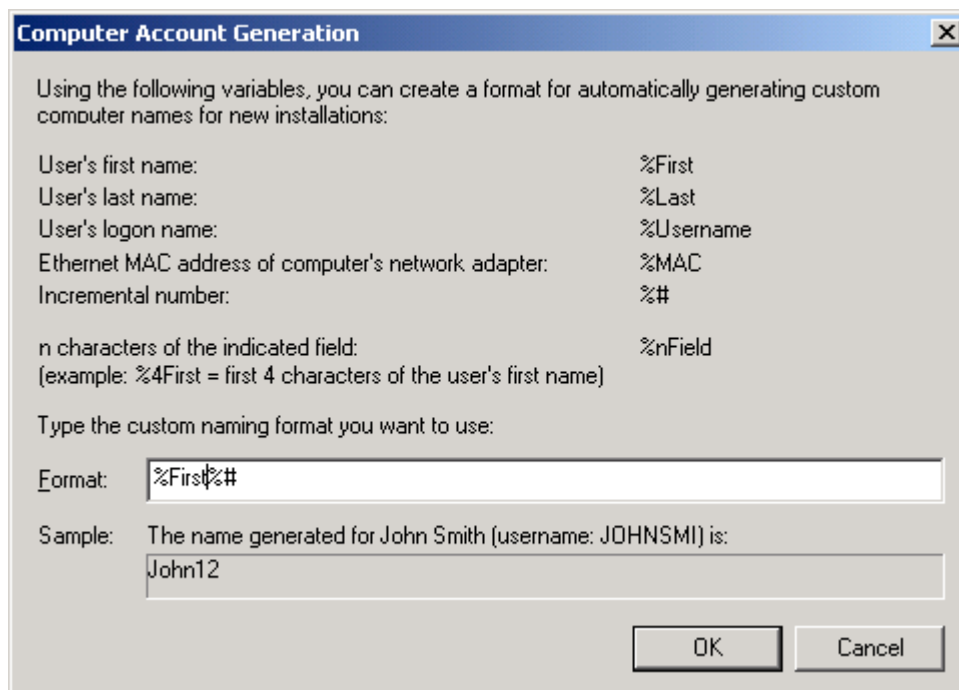
《Figure 47》 Remote Install function setup, it is very important.



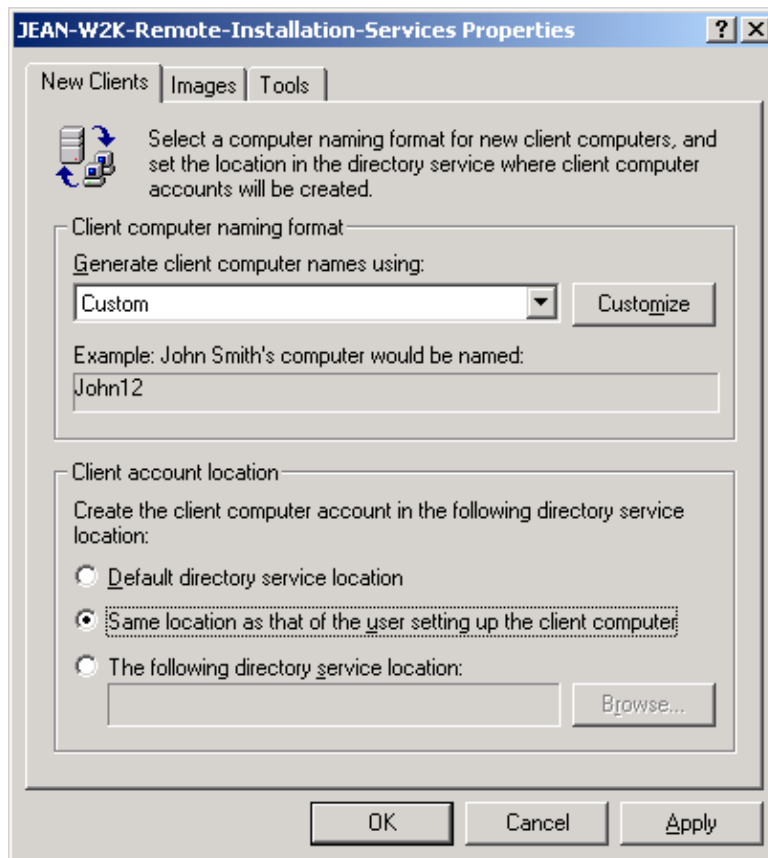
《Figure 48》



《Figure 49》



《Figure 50》



《Figure 51》 Final, select Respond to client computers requesting service.

